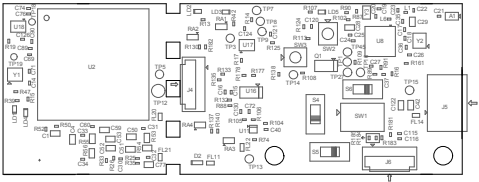


TOP ASSEMBLY FILE-AOP_EVM_B

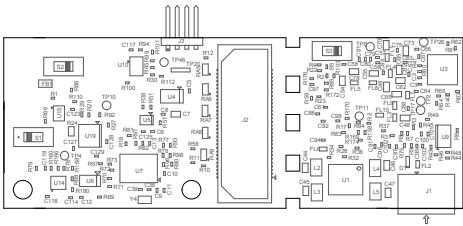


ZZ1- Install lable in silkscreened box afterfinal wash.Text shall be 8 pt font. Text shall be per the Label table in the PDF schematic.
ZZ2-These assemblies are ESD sensitive, ESD precautions shall be observed.
ZZ3-These assemblies must be clean and free from flux and all contaminants. Use of no clean flux is not acceptable.
ZZ4-These assemblies must comply with workmanship standards IPC-A-610 class 2, unless otherwise specified.

COMPONENTS MARKED 'DNP' SHOULD NOT BE POPULATED.
ASSEMBLY VARIANT: 001

PCB VIEWED FROM TOP SIDE	BOARD #:	PROC091	REV:	B	SVN REV:	Not In VersionControl
M13 Assembly TOP	TID #:	N/A				
PLOT NAME = Top Assembly Drawing	GENERATED	: 3/11/2019	9:33:28 PM		TEXAS INSTRUMENTS	

BOTTOM ASSEMBLY FILE - AOP_EVM_B



COMPONENTS MARKED 'DNP' SHOULD NOT BE POPULATED.
ASSEMBLY VARIANT: 001

PCB VIEWED FROM BOTTOM SIDE	BOARD #: PROC091	REV: B	SVN REV: Not in versioncontrol
M14 Assembly Bottom	TID #: N/A		
PLOT NAME = Bottom Assembly Drawing	GENERATED : 3/11/2019	9:33:29 PM	